

OFF-PAS Practicum Matching: Information Session

Co-presented by:

**Miri Ben-Dat (She/her) and Leah Potash
(She/her)**

Practicum Coordinators

February 15, 2024



The Practicum Office: Who are we?

- **Assistant Dean, Field Education**
 - Eileen McKee
- **Practicum Assistants**
 - Catherine Connochie
 - Matthew Cho
- **Practicum Coordinators**
 - Alexi Sparaggis
 - Leah Potash
 - Miri Ben Dat
 - Samar Hossain
- **Acting Indigenous Trauma Resiliency (ITR) Coordinator**
 - Lauren Akbar



WELCOME

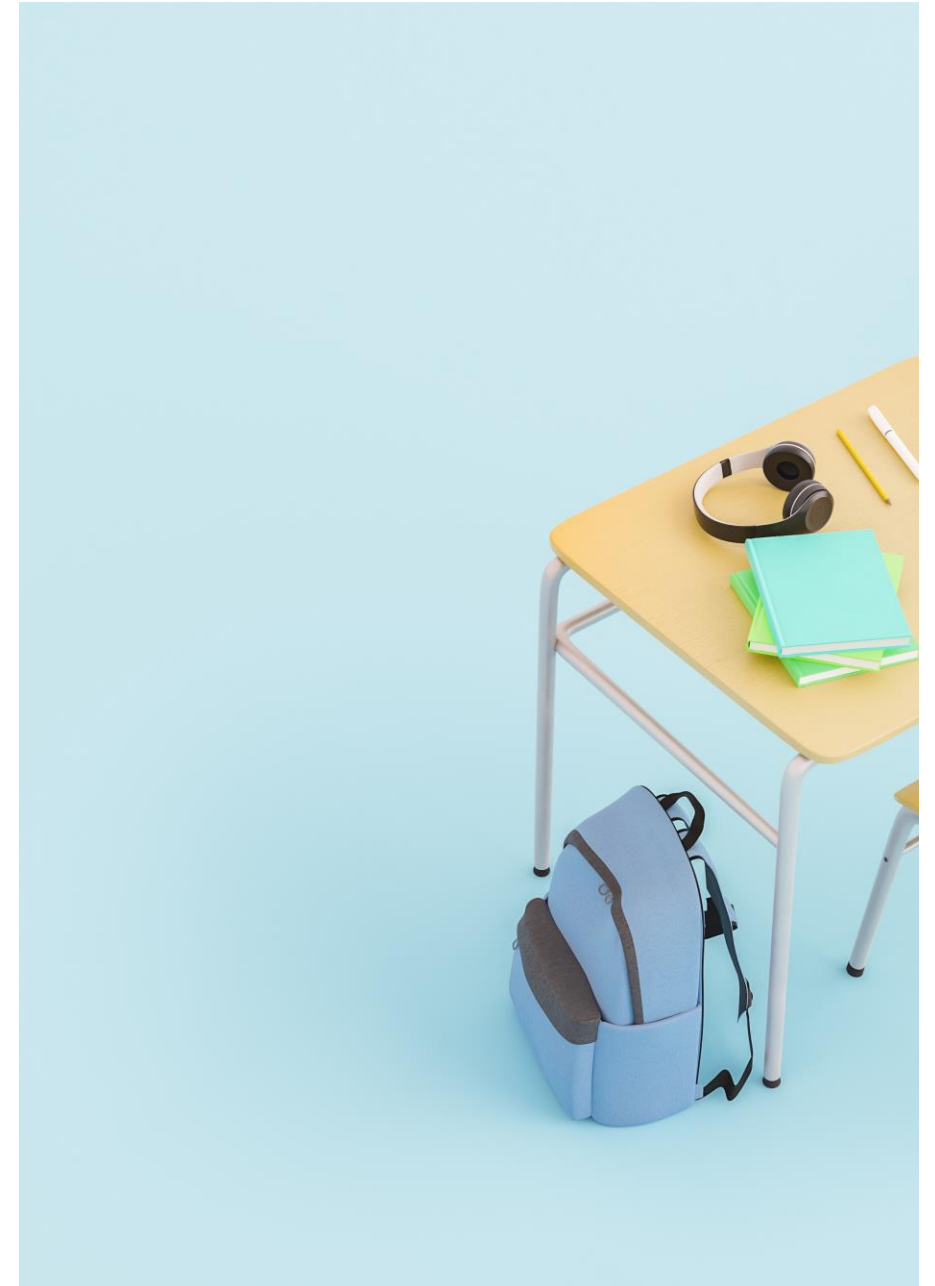
Today we are discussing **early practicum** matching, also known as **Off-PAS Matching**. We will **not** be discussing the PAS (Practicum Administration System).

We are having this session today because there are already many practicum opportunities posted on the website with fast-approaching deadlines.

Information about **PAS Matching** will be provided by Eileen McKee and Catherine Connochie

Date: Monday, April 15th

Time: 12:00-1:15.



What are Off-PAS Practicum Opportunities?

- They are practicum opportunities posted on the website (not the PAS) that have a unique application process and/or requirements.
 - Most require students to send a cover letter and resume to the practicum site before a specific deadline. Each site has its own application process.
 - Most of these sites only follow-up with students who are accepted for interviews.
- * Please note, there is **no** obligation or requirement for students to participate in this process.

Off-PAS Practicums fall into three different categories:



Competitive practicums

These are opportunities where students apply for practicums that are also open to other academic programs. Students compete for a limited number of practicum spots. There are also **internal** competitions. These are opportunities where FIFSW students compete for a practicum.



For equity-deserving groups

These are opportunities where field instructors indicate that they wish to support equity deserving groups and secure practicums for BIPOC, LGBTQ2S and/or Gender-Diverse students.



Outside of the GTA

Practicum opportunities located outside of the GTA are posted Off-PAS with the objective that students will be matched early with opportunities in their own communities.

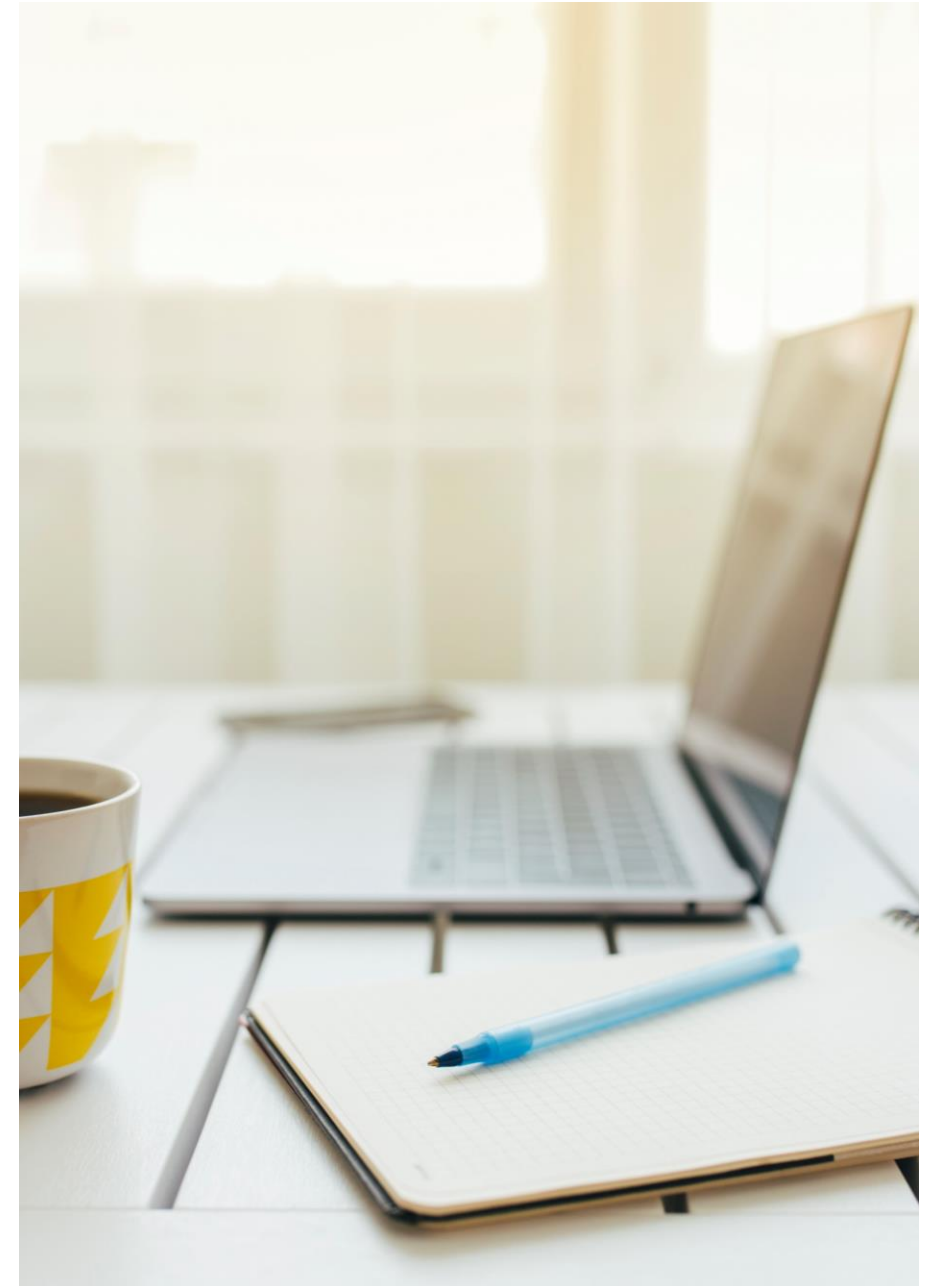
Where are Off-PAS Opportunities Posted?

They can be found in the Practicum section of the FIFSW website. To view these opportunities, go to:

Practicum > Current Information For Students > Off-PAS Practicum Opportunities > **Practicum 2 Off-PAS Opportunities**

<https://socialwork.utoronto.ca/practicum/for-students/off-pas-practicum-opportunities/practicum-2-off-pas-opportunities/>

Students are encouraged to check out the practicums on the website regularly as new opportunities continue to be added.



Competitions: What are they?

Competitive practicums are opportunities where FIFSW students apply for practicums that are also open to students from other academic programs. Students compete for a limited number of spots.

There are also **internal** competitions. These are opportunities where FIFSW students compete internally for a practicum. Field Instructors will review applications and decide which candidates to interview.

Practicums secured for Equity Deserving Groups

Some field instructors express a preference for students in equity deserving groups; BIPOC, LGBTQ2S and/or Gender-Diverse students. These preferences are clearly indicated on the FIFSW website.

There may also be other preferences or requirements specified by field instructors, such as evening attendance, language requests, access to a car, drivers license etc...

Students should make sure to meet the requirements (includes Field of Study) before submitting an application.

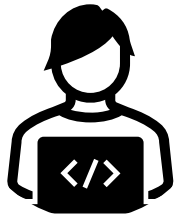
Outside of the GTA Practicum Opportunities

Practicum opportunities located outside of the GTA are also posted on the website. The location of the practicum is in **the title**.

If you are interested in a practicum outside of the GTA that is **not** on our website, please email miri.ben.dat@utoronto.ca.

The Practicum Office cannot guarantee that all requests for opportunities outside of the GTA will be met. However, we always try our best to accommodate student requests.

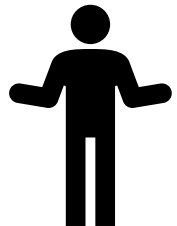
Who Should Apply For an Off-PAS Practicum?



Anyone interested in one of the available opportunities on the website



Anyone keen to begin the practicum matching process soon (you can start today!)



Anyone who meets the specific practicum requirements indicated on the website



Anyone interested in practicum opportunities located outside of the GTA

What If I apply for an Off-PAS practicum and am successful?

If you apply and are offered a practicum and accept the offer- congratulations- you are matched! You will not be a part of the PAS matching process

What If I apply and do not get a practicum or decide not to accept a practicum offer?

If you do not get a practicum offer or apply and decide that it is not a good fit, you will be included in the PAS matching process.

We ask that as a courtesy to the practicum site, students respond to a practicum offer within 48 hours.

Please keep us informed of your decision.

What if I applied- but have not yet heard back from an Off-PAS site and the PAS matching process is beginning?

We hope that the **early matching process** will be completed before the PAS opens. If, however, you have interviewed for an Off-PAS practicum and have not yet heard back, you **can** participate in the PAS matching process.

If you are waiting for a response from an Off-PAS site, please reach out to us and we will follow-up with the site.

Other Important Information:

- Students are asked **not** to contact potential practicum sites to secure their own placements. Practicum matches must be secured through the Practicum Office; whether through the PAS matching process, by applying for an Off-PAS practicum or by working collaboratively with a Practicum Coordinator. If you have any questions or ideas about a new partnership organization, please do not hesitate to be in touch.
- Students who think they may require accommodations in their practicums are encouraged to contact Accessibility Services at accessibility.services@utoronto.ca or 416-978-8060.

Current Off-PAS Summer Opportunities

Year 2/Advanced Standing

- [Toronto Humane Society](#) – open until Thursday February 15, 2024
- [Green Care Farms. Milton](#) – open until Tuesday February 27, 2024
- [YouThrive – Youth Wellness Centre, Hamilton](#) – open until Thursday February 29, 2024 **For a black, indigenous, racialized student**
- [Women’s College Hospital Academic Family Health Team](#) – open until Friday March 1, 2024

Both Years

- [York Region Children’s Aid Society](#) – open until Thursday February 15, 2024
- [Napanee Community Health Centre](#) – open until Thursday February 29, 2024

Current Off-PAS Opportunities for September 2024:

- [Arktos Wellness Services Canada Ltd. Remote Private Practice \(PDF\)](#) – open until Tuesday February 20, 2024
- [York Hills Centre for Children, Youth and Families \(PDF\)](#) – open until Thursday February 22, 2024
- [Toronto Humane Society \(PDF\)](#) – open until Wednesday February 28, 2024
- [Women’s College Hospital, Reproductive Life Stages Program](#) – open until Friday March 1, 2024
- [Ontario Veterinary College Health Sciences Centre Guelph, Ontario \(PDF\)](#) – open until Tuesday March 5, 2024
- [Thrive Counselling Services, Oakville \(PDF\)](#) – open until Thursday March 7, 2024
- [Toronto Metropolitan University, Center For Student Development and Counselling](#) – open until Thursday March 7, 2024

Current Off-PAS Opportunities continued

- [Women's College Hospital Academic Family Health Team](#) – open until Thursday March 7, 2024
- [York University, Graduate Student Wellness Services \(PDF\)](#) – open until Thursday March 7, 2024
- [Centre for Addiction and Mental Health Crisis and Critical Care Program, Adult Inpatient Acute Care Services \(PDF\)](#) – open until Tuesday March 12, 2024
- [Friends of Ruby, Clinical Counselling Program \(PDF\)](#) – open until Thursday March 14, 2024
- [Hamilton Wentworth District School Board \(HWDSB\) \(PDF\)](#) – open until Thursday March 14, 2024
- [Napanee Community Health Centre \(PDF\)](#) – open until Thursday March 14, 2024
- [North York General Hospital, Inpatient Geriatric Psychiatry \(PDF\)](#) – open until Thursday March 14, 2024
- [Women's College Hospital, Crossroads Refugee Health Clinic \(PDF\)](#) – open until Thursday March 14, 2024
- [Family Services of York Region \(PDF\)](#) – open until Friday March 15, 2024
- [The Trauma Centre \(PDF\)](#) – open until Thursday March 28, 2024

Questions?

Thank you for joining us!

