



camh Centre for Addiction
and Mental Health

Bertha Rosenstadt Trust-FIFSW Showcase:
Centre for Addiction and Mental Health
February 6, 2015

BR Fund contributed towards the following research projects at CAMH:

Quality Improvement & Evaluation of Social Work Mentorship Program at CAMH

Developing high support housing: How hospital-community partnerships are creating pathways to community in Toronto

Forensic Division: Two year Pilot Study on Prevalence of Traumatic Life Events – Implications for Assessment and Treatment

The Relationship between Interprofessional Team Collaboration, Effectiveness and Client Centred Care in the Dual Diagnosis unit

Quality Improvement & Evaluation of IPE facilitated student seminars



camh Centre for Addiction
and Mental Health

**Quality Improvement and Evaluation
of the Social Work Mentorship
Program at CAMH**

Claudia Tindall MSW RSW, APC

Mentorship



The Mentorship Research Project

- The research project had 4 goals:
 - To identify the experiences and perspectives of social workers as mentors or mentees
 - To evaluate the impact the program has had on social workers
 - To improve the mentorship program
 - To integrate data collected from these staff groups with theoretical, empirical, and practice literature on mentorship
- The aim of the research project was to produce a formative evaluation of the mentorship program at CAMH which was successfully achieved.

On-Line Survey Findings

Mentees vs. Mentors 2010-13

Mentee 2010-13	Question Strongly agree/Agree	Mentors 2010-13
96%	Recommend program to others	100%
96%	Positive experience with mentee/mentor	100%
88%	Positive impact on social work practice	87%
89%	Help connect with social work discipline	80%
84%	Helped develop professional goals	80%
NA	Opportunity to demonstrate leadership	100%
NA	Received training from Mentorship Comm.	80%
NA	Received support from Mentorship Comm.	80%
NA	I would participate again	87%
88%	Helpful orientation to CAMH	NA
92%	Developed professional network at CAMH	NA
96%	Learned valuable information from mentor	NA
84%	Increased confidence in role as SW	NA





camh Centre for Addiction
and Mental Health

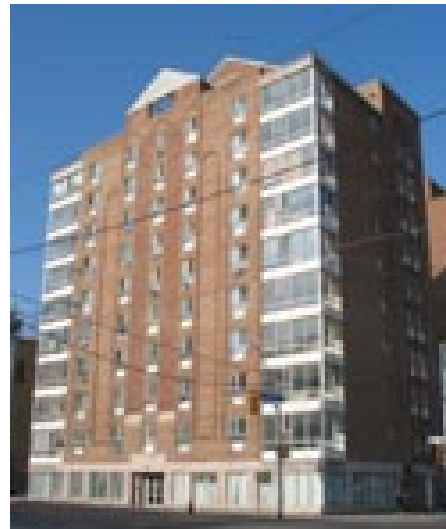
**Developing high support housing:
How hospital-community
partnerships are creating pathways
to community in Toronto**

Sandra Cushing MSW RSW, APC



The Partnership at 90 Shuter St.

- CAMH Schizophrenia Program
 - Bridging from the inpatient unit
 - Case Management
 - Outpatient Psychiatry
 - Primary Care
 - Peer Support
- Homes First
 - Bricks & Mortar
 - Access to Community
- Pilot Place
 - On-site 24/7 staff
 - 9 units, individual rooms each client



Pivotal Role of Jessica Chan (Meisner) MSW Student in Study

- Literature Review
- Qualitative Interviews with Clients after settling in at Pilot Place
- Qualitative Interviews with Staff Members involved in Partnership

Highlights of Qualitative Interviews

Client Interviews

- "I'm talking more...I haven't done much of that in my life."
- "I'm doing a little bit better. I get to go out and walk around."
- "I feel better here. You get your marbles back. You get a bit loony over at Queen St."
- "The quality of the apartment and the food is very good"

Staff Interviews

- Housed, social, independent, motivated, confident:
- "They were very unmotivated and didn't bother to go out [while on the unit], but there they go to church, go out to dinner...swimming.... on a regular basis."
- "I see them more confident...more comfortable and open...just seeing the increase in self-esteem and confidence was great."



camh Centre for Addiction
and Mental Health

**A Study on the Prevalence of
Potentially Traumatic Life Events and
Post-Trauma Symptoms in an
Inpatient Population of Forensic
Patients**

Suraya Faziluddin MSW RSW

Kiren Sandhu MSW RSW, APC

Introduction and Research Question

- Clinicians interested in understanding and working with trauma in the Forensic Division of the Complex Mental Illness Program were brought together and reviewed the existing literature
- Existing studies were limited – they did not examine this population, or noted only PTSD rates and not other potential negative health impacts; however, existing research notes that individuals with serious mental illness also have higher rates of trauma exposures, especially to exposures that are linked to higher rates of later PTSD
- Our study asks: **What is the prevalence of trauma in the population of inpatient forensic psychiatric patients at CAMH?**
- We are tracking: Exposure to Traumatic Life Events; PTSD screening results; other Trauma-related symptoms such as anxiety, substance use, sleep disturbances etc.
- Additional information on the index offence, length of stay, diagnoses and social connections is also being collected



Results so far...

- Within the research sample: **25% of male subjects meet cut-off for PTSD diagnosis, and 50% of female subjects meet cut-off for PTSD diagnosis**
- These rates of PTSD from the PCL – C (version DSM IV) are similar to those identified in the literature for persons with severe mental illness (Rosenberg et al, 2001) in non-forensic samples.
- The Trauma Symptom Inventory – 2 has yet to be scored. This Inventory has many subscales for trauma-related symptoms and will likely reveal further important clinical information about this research population.
- Additional data from the MAST and DAST, as well as from the interview, and data collection sheets has yet to be incorporated – this would include information on substance use patterns, social networks, nature of offence etc.
- In the remaining analysis: How these rates of PTSD relate to other trauma-related symptoms, type of offence, diagnosis, relationship to victim, age of research subject, etc.

Why this matters for Social Work...

- Little current research exists – the study examines the interaction between intrapersonal experience, social context, and life events, in a socially marginalized population
- Aims to provide guidance on treatment needs based on the unique experiences of this population, and identified sub-groupings
- The research team is Inter-Professional, also provides opportunities for students to learn about clinical research
- Potential, with further study, to explore the impact not only of single-event traumatic experiences, but also the implications of repeated experiences in this population

Our thanks to...

- We would like to thank all of the clients who shared their experiences with us. Also all the social workers, social work students, interprofessional colleagues, community partners, stakeholders who have made important contributions and participated in the research projects.
- We would like to acknowledge the support received from the Factor-Inwentash Faculty of Social Work, University of Toronto.
- Jane Paterson, Director of Interprofessional Practice
- Colleen Kelly, Discipline Chief of Social Work