

OPPORTUNITIES
 PARTNERSHIPS
 VISION
 IMPACT
 INSPIRATION
 CHANGE
 HORIZONS
 COMMITMENT
 INSIGHT
BOUNDLESS
 RESEARCH
 POSSIBILITIES
 CREATIVITY
 DEDICATION
 TALENT
 ASPIRATIONS
 GRATITUDE
 INNOVATION
 LEGACY

REACH

BOUNDLESS POSSIBILITIES

FIFSW LAUNCHES BOUNDLESS CAMPAIGN

On November 20, 2012, the Factor-Inwentash Faculty of Social Work launched the Campaign for Social Work. With an ambitious goal of \$35 million, this historic campaign focuses on a strong array of intriguing investment opportunities derived from our Faculty's Academic Plan.

The Campaign for Social Work will enable this Faculty to continue its trajectory of excellence and innovation that has established it as one of North America's top-ranked social work schools. Led by Chair Sheldon Inwentash, this transformative campaign promises to expand our Faculty's leadership across critical areas of knowledge and build on our tradition of educating tomorrow's social work leaders.

Campaign priorities are designed to propel our Faculty forward by capitalizing upon established strengths, in response to the evolving needs of our society and profession. They will enable us to attract and retain the most talented faculty and students, to pursue

cutting edge research in emerging issues and to develop innovative new educational methods such as a simulation lab where students will learn to become both caring and skilled practitioners and leaders in their field.

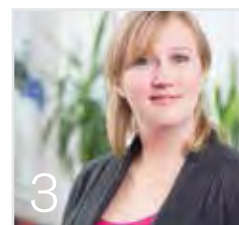
The Campaign for the Factor-Inwentash Faculty of Social Work is an integral part of U of T's \$2 billion Boundless campaign. Through Boundless, U of T seeks to address today's pressing issues, by preparing leaders with the knowledge and skills to work across borders, boundaries and disciplines. Resting on the twin pillars of preparing global citizens and meeting global challenges, Boundless recognizes that solutions will emerge through innovation that is collaborative and cross-disciplinary. The Factor-Inwentash Faculty of Social Work – with our belief that social work is essential to the growth of successful societies and our passionate commitment to promoting societal well-being – is critical to the success of this unprecedented campaign.

“The Factor-Inwentash Faculty of Social Work is very committed to looking at needs and issues of disadvantaged communities within Toronto, with its diverse communities and populations. By producing new knowledge and putting it into practice, the Faculty plays an important role in responding to the kinds of changes we are experiencing as a society.”

Axelle Janczur, Executive Director, Access Alliance Multicultural Health and Community Services

TOWARDS 2014!

Join the FIFSW in celebrating 100 years of excellence in social work education, practice and research.



Building the first Simulation Lab for Social Work



Pursuing Research Across the Globe



Social Policy Advocate Dan Zuberi Joins the Faculty

BOUNDLESS VISION

because we believe we can envision a better future

BOUNDLESS OPPORTUNITIES

because that's what we're working to create

BOUNDLESS HORIZONS

because we want to reach people all over the globe

BOUNDLESS IMPACT

because that is the power of social work





Marshall McLuhan said, "I wouldn't have seen it if I hadn't believed it." Belief – it comes first. At the Factor-Inwentash Faculty of Social Work, we have that belief. We have a vision of how we see our future and of what this Faculty can become, as we build upon the successes of the past and move forward proudly. And most of all, we have a powerful belief in the kind of impact this Faculty can have. The far-reaching goals of the Campaign for the Factor-Inwentash Faculty of Social Work, which are grounded in our Faculty's Academic Plan for the next five years, will propel us toward that vision, promising an even brighter future.

Our Faculty stands at a decisive moment. Next year, we will celebrate a momentous occasion – the centennial of this Faculty's founding. With the upcoming celebrations of that landmark event and the launch of the Campaign for the Factor-Inwentash Faculty of Social Work, we are turning to our exceptional community of alumni, friends and supporters and looking forward to strengthening those crucial bonds. Together, we will succeed in making our Faculty's vision a reality.

With best wishes,

Faye Mishna
Dean, Factor-Inwentash Faculty
of Social Work
University of Toronto

BOUNDLESS POSSIBILITIES

Continued

"Positive change takes place when visionary leaders come together to shape the future," Chair Sheldon Inwentash said of the initiative. "The Campaign for the Factor-Inwentash Faculty of Social Work is a rare opportunity to ensure that our students, alumni and researchers have the tools they need to contribute effectively to the welfare of our most vulnerable citizens and to the well-being of individuals, families and communities across Canada and around the world."

Sheldon Inwentash, as Chair, has brought together a distinguished Campaign Executive Committee consisting of prominent business and community leaders. With his leadership and that of the Honorary Chairs – Lynn Factor, Shari Fell, Margaret McCain and Rose Wolfe – as well as the Executive members, we have an outstanding team that will ensure the success of this campaign. The realization of our campaign goals will position this Faculty to assume a leadership role as a pre-eminent forum for social work research and education.

Our Faculty is deeply grateful for the continued generous support of our alumni, friends and volunteers. We look forward to building on that relationship as we explore together the boundless possibilities of the Campaign for the Factor-Inwentash Faculty of Social Work.

"When I return to Ghana, I will be the only PhD holder in that country who was trained at the Factor-Inwentash Faculty of Social Work at the University of Toronto. I feel well prepared for the work I want to do there as a researcher and teacher of the next generation of Ghanaian social workers"

Paul Issahaku (PhD 2012)



Lynn Factor and Sheldon Inwentash

BOUNDLESS GENEROSITY

The Campaign for the Factor-Inwentash Faculty of Social Work will propel this Faculty to new heights. With the boundless generosity of our alumni, friends and benefactors – such as yourself – the goal of \$35 million is within reach. Both your financial support and your time commitment are deeply appreciated.

Together, we will tap the limitless potential of our students, faculty members, alumni and friends to enhance the well-being of people and communities across the globe.

SHAPING THE FUTURE: CAMPAIGN PRIORITIES

BOUNDLESS INNOVATION

WE WANT TO TRANSFORM THE SOCIAL WORK EDUCATIONAL EXPERIENCE BY BUILDING THE FIRST SIMULATION LAB FOR SOCIAL WORK.

Our Faculty is leading the way internationally as an innovator in social work education through our use of simulation to teach and evaluate students. By using simulation in social work, students interact with highly trained actors in scenarios frequently encountered by social workers in the field. During these interactions, they are observed by an instructor who later provides feedback.

Simulation has enormous benefits as an educational tool and learning opportunity. It enables students to practise and hone their skills in a safe, realistic environment before employing them with actual clients. And because the students receive feedback, they have a remarkable opportunity – both to identify their own areas of strength and weakness and to improve. Our Faculty wants to build a state-of-the-art simulation lab by creating eight interview rooms equipped with built-in video and sound. Each room will represent a typical setting – a hospital room or a family living room, for example – in which social workers meet with clients.

"My participation in a simulated scenario during my first semester at the Faculty was one of the most important experiences I had in the MSW program. Simulation provided me with a safe environment in which I was allowed to take risks, make mistakes, receive valuable feedback and develop important skills that I now apply in my career as a child advocate. Preparing students with the best possible skills through simulation will not only benefit them, it will make them more successful, increase their impact with clients and strengthen the entire social work field."

Kayleigh Gliedt (MSW 2012) is a child advocate at Boost Child Abuse Prevention and Intervention.

BOUNDLESS LEADERSHIP

The Campaign Executive Committee

The Campaign for the Factor-Inwentash Faculty of Social Work is led by Sheldon Inwentash, Chair, and an Executive Committee of outstanding volunteers whose leadership and commitment exemplify the philanthropic spirit that has made us one of North America's most successful schools of Social Work.

Chair
Sheldon Inwentash

The other distinguished members of this transformative campaign are:

Honorary Chairs
Lynn Factor
Shari Fell
Margaret McCain
Rose Wolfe

Karen and Ray Arbesman
Campbell and Sara Becher
Joseph and Laurissa Canavan
Richard Cummings
Arthur Dalfen
Jennifer and Pat DiCapo
Eileen and Tye Farrow
Gerald Feldman
Heather and Max Gottlieb
Laura Klaehn
Theo Koffler
David Peltz
Paul Stein and Beth Weingarden



Kayleigh Gliedt (MSW 2012)

BEHIND THE SCENES AT A SIMULATED SCENARIO

Kayleigh Gliedt's simulated scenario began when she received a short description of her client. She spent a few minutes reviewing the information, then entered a room with a trained actor who was playing her client and a professor who was there to observe. The actor had been given a detailed description of the client and was trained to respond to questions from the character's perspective. Kayleigh conducted a fifteen minute assessment of her client. The actor's responses were based on Kayleigh's ability to engage her client and identify key issues.

Afterwards, Kayleigh received feedback. She learned that she needed to provide the client with more time to express emotions before moving on to the next question. Now, in her work as a child advocate, her simulation experience has not only increased her confidence in her skills, it has also made her more aware of how to respond whenever clients become visibly upset.

THE POSSIBILITIES ARE BOUNDLESS

Visit us online

Keep up to date on Factor-Inwentash news and events.
www.socialwork.utoronto.ca

Donate Today

and help make a difference in the life of a social work student. www.socialwork.utoronto.ca/alumni/makeadifference.htm

Towards 2014!

Join the FIFSW in celebrating 100 years of excellence in social work education, practice and research.

CAMPAIGN PRIORITIES



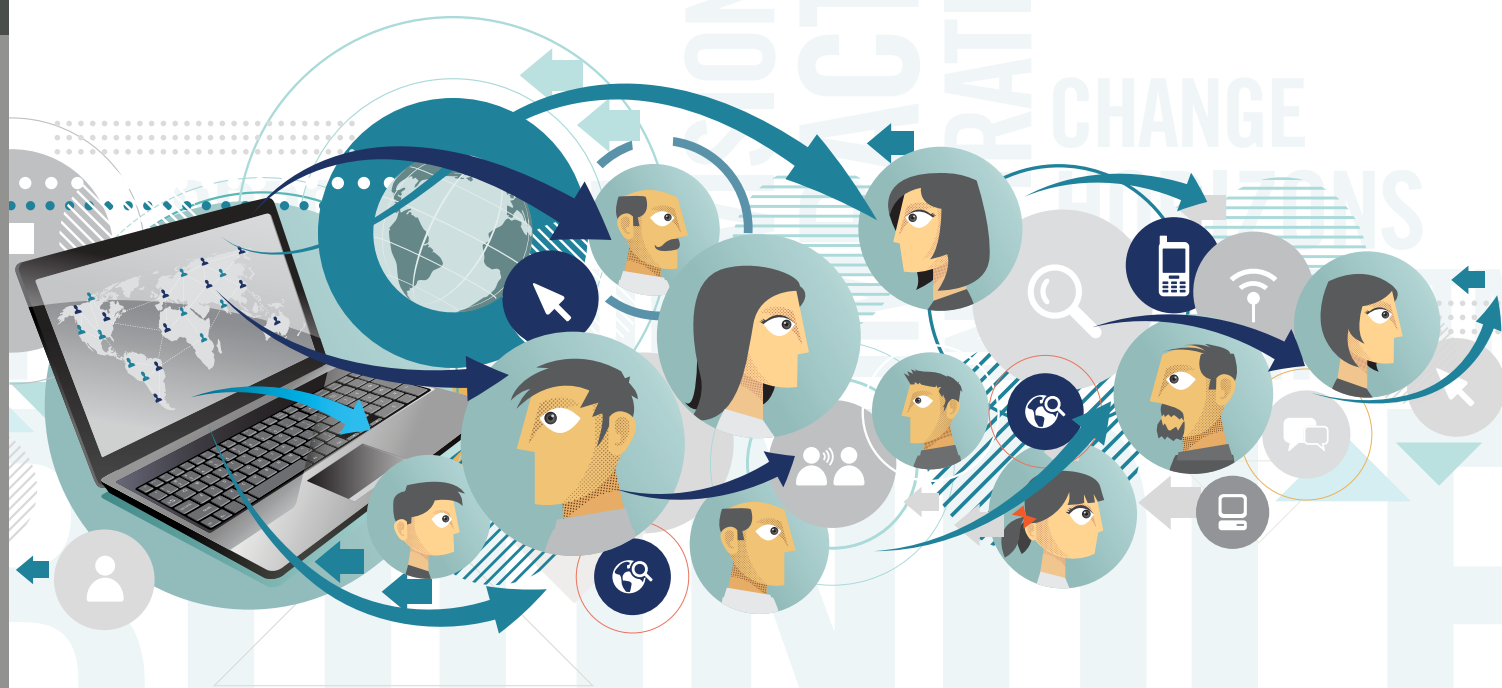
Associate Professor Ramona Alaggia
Factor-Inwentash Chair in Children's Mental Health

BOUNDLESSIMPACT

WE WANT TO HIRE MORE INTERNATIONALLY ACCLAIMED FACULTY MEMBERS AND CREATE MORE ENDOWED CHAIRS.

As a Faculty, we are committed to academic excellence in teaching, research and practice. That means that we need to be able to attract and retain internationally acclaimed faculty members who are pursuing cutting edge research.

These faculty members will need stable, long-term funding, in order to develop their research projects. Endowments provide this kind of funding. Our plan is to create a number of endowed chairs, named in accordance with the wishes of investors. This will enable outstanding faculty members to research such emerging issues as mental health, child and human development, neuroscience and wellness, chronic health conditions and social work and Aboriginal issues.



BOUNDLESSKNOWLEDGE

WE WANT TO SUPPORT LEADING EDGE RESEARCH IN EMERGING AREAS SUCH AS CYBER COUNSELLING.

Profound economic transformations, accelerating population shifts and the explosion of social media pose exciting possibilities for human development. At the same time, they present challenges that we are only beginning to explore and understand as a society.

As a Faculty, we are dedicated to supporting innovative research programs on the emerging challenges of our times. We are seeking investments to support research on such crucial issues as the impact of social media on social work, the burgeoning new field of cyber counselling, the extraordinary opportunities offered by the study of human development, as well as cyber bullying, eating disorders, violence against women and the challenges facing LGBT students.

"During the second year of my MSW, I provided cyber counselling to University of Toronto undergraduate students through an eight month practicum at Counselline. My social work education in general has been a huge benefit in my legal studies but I have found that my experience with the Counselline program to be the single best life experience/education for what I'm doing now in law school."

Katie Hunter (MSW 2012) is a first year law student at Queen's University.

Did you know that you can arrange to have a gift card sent from the Faculty when you honour someone special in your life with a donation?

Visit the FIFSW website and click on "Alumni and Friends" and then "In Honour of" to learn more.

BOUNDLESSHORIZONS

WE WANT TO PURSUE INNOVATIVE RESEARCH ACROSS THE GLOBE.

Faculty researchers are searching for solutions to the defining issues of our times in communities around the world. We want to support and expand these studies which are making an important contribution to the well-being of people across the globe.

Our Faculty is committed to collaborating with others to extend the benefits of knowledge, education and practice. We believe that research must be accessible and available to the people who are directly affected by the findings. In Australia, Brazil, China, Israel and Thailand, we plan to continue to develop cutting edge programs and help educate a new generation of social workers, thus contributing to improved practices and policies in those countries.



Professor K Tat Tsang (forefront) with members of the China Project

"The work done by our faculty members has brought a rich repertoire of knowledge and skills from different parts of the world to Canada, so we can be confident that what we are teaching and practising is relevant to people from diverse cultures and appropriate to their understanding of the world."

Professor Ka Tat Tsang
Factor-Inwentash Chair in Social Work in the Global Community
Director, China Project

CELEBRATE AND COMMEMORATE OUR FACULTY'S 100TH ANNIVERSARY

In 2014, our Faculty will celebrate 100 years of excellence in social work education, practice and research. The official planning is now underway. We are delighted to have a dynamic group of alumni on the FIFSW 100th Anniversary Planning Cabinet, led by our committed co-Chairs: Tammy Balitsky, Professional Practice Leader, Social Work Research and Education at North York General Hospital and Rashaad Vahed, Regional Clinical Supervisor at the Office of the Children's Lawyer with the Ministry of the Attorney-General.

Events, which will run from September 2014 to May 2015, will celebrate and commemorate this momentous occasion. Other committees are now being formed. We would love to have as many alumni as possible involved in the planning process. If you would like to join a committee or participate in some way, please contact the Advancement Office at 416-978-4437 or fund.fsw@utoronto.ca.

"Staff and faculty at the Factor-Inwentash Faculty of Social Work share a strong vision of excellence in the field of social work. It has been this way from the beginning and will continue to be a seminal component of teaching, research, policy, administration and social work practice at the FIFSW. The commemoration and celebration of this Faculty's 100th anniversary will honour that long history of social work excellence."

Tammy Balitsky, Co-Chair of the FIFSW 100th Anniversary Planning Cabinet

"The 100th Campaign for the Factor-Inwentash Faculty of Social Work will commemorate and celebrate the vital role that social workers have played, and are continuing to play, as leaders at the edge of change – in research, practice and education."

Rashaad Vahed, Co-Chair of the FIFSW 100th Anniversary Planning Cabinet

TOWARDS 2014! OUR FACULTY WILL BE CELEBRATING 100 YEARS OF EXCELLENCE. BE A PART OF IT.

BOUNDLESS COMMITMENT

WE WANT TO ESTABLISH NEW SCHOLARSHIPS AT THE MASTERS AND DOCTORAL LEVELS.

Student support is a crucial investment in the future of social work. We want to create more needs-based and merit-based scholarships at the masters and doctoral levels. One of our Faculty's top priorities is to provide scholarships to ensure that all academically qualified students, regardless of financial circumstances, can receive the professional education they want.

At the same time, as a Faculty that is committed to educating the social work leaders of tomorrow, we must have the ability to offer competitive scholarships so that we can attract the brightest and most promising students to our programs.

"This award is especially meaningful to me because of my past experiences with depression and suicide. My successful recovery would not have been possible without the support and assistance I received from exceptional counsellors, which in turn inspired me to volunteer in mental health, and ultimately to pursue a career as a mental healthcare social worker. I am deeply committed to becoming the best counsellor I can so that I can help others who are suffering from depression and are at risk of suicide. This scholarship is helping to make that possible."

MSW student and scholarship recipient

FIFSW Spring Reunion 2013 & Alumni Association AGM

May 29
6:00 pm – 9:00 pm

Come back to the Faculty for a stimulating evening of networking and learning. Mark your calendars now for the 2013 FIFSW Spring Reunion and the FIFSW Alumni Association AGM. It's a wonderful opportunity to connect with other alumni and faculty members and learn about important research being conducted at the Faculty today.

6:00-6:30 pm FIFSW Alumni Association AGM

6:45-8:00 pm Research seminars by faculty members

8:00-9:00 pm Mix and mingle

BOUNDLESS VISION

DONATE TO THE DISTINGUISHED SPEAKERS SERIES

On the FIFSW website, click on: "In honour of our upcoming 100th Anniversary Donate"

IN HONOUR OF OUR UPCOMING 100TH ANNIVERSARY DONATE TO THE DISTINGUISHED SPEAKERS SERIES

To create a memorable legacy in honour of our Faculty's 100th anniversary, the Alumni Association wishes to establish an endowed speakers series. This series will bring cutting edge thinkers to our Faculty on an annual basis to explore avant-garde issues relating to social work. By fostering debate and dialogue about crucial societal questions, these lectures will benefit students, alumni, researchers and the community.

We are grateful to Alumni President Doreen Winkler and Eileen McKee, Associate Dean, Field Education, who are co-chairing the

fundraising committee for the series, as well as alumni Peter Murchison, who is Vice-Chair.

By donating to this initiative, you will not only commemorate this significant milestone at our Faculty – at the same time, you will be investing in this Faculty's future for generations to come.

Donate to **The Distinguished Speakers Series** and double the impact of your gift – all donations will be matched dollar per dollar.

“

"To commemorate this special occasion, we would like our Alumni to establish *The Distinguished Speakers Series*. This series will bring provocative, cross-disciplinary thinkers to our Faculty – as well as champions in our field – to share current best practices, thus helping to build stronger communities, create opportunities for youth, support seniors, advocate for marginalized communities and much more. The interest from the endowment will enable the series to continue in perpetuity."

Eileen McKee, Fundraising Co-Chair for The Distinguished Speakers Series

Social Policy Advocate Dan Zuberi Joins the Faculty

Social policy researcher and thinker, Dan Zuberi, recently joined our Faculty as an Associate Professor of Social Policy with a joint appointment to the School of Public Policy and Governance.

Zuberi comes to our Faculty from the University of British Columbia where he was an Associate Professor of Sociology. He was the William Lyon Mackenzie King Research Fellow at Harvard University in 2011-2012 and spent 2010-2011 as a Visiting Scholar at the University of California at Berkeley in the Department of Sociology.

Zuberi is passionate about his work as a researcher, scholar and teacher – all of it rests on the firm foundation of social justice. His research focuses on comparing conditions of the working poor in Canada and the United States. His award-winning first book, which examined the conditions of workers in the same hotel chain in Vancouver and Seattle, grew out of his Harvard University PhD thesis in Sociology and Social Policy. "Differences That Matter: Social policy and the Working Poor in the United States and Canada" (Cornell University Press/ILR Press, 2006) received

several awards, including the Michael Harrington Book Award from the New Political Science Section of the American Political Science Association.

For Zuberi, how we treat our working poor goes to the core of how we want to live as a society. His latest book, which is due out this September, examines the impact of hospital outsourcing and privatization on hospital workers in the Vancouver region.

Zuberi – whose research has shown him that social policy can play a central role in people's lives by mediating the effect of global trends – warns that changes to policy are rapidly eroding much of what has distinguished Canada.

"It's heartbreaking," he says, "when you do interviews with people who are working so hard. They're playing by the rules and they've come to Canada to now have a better life and they're really, really struggling. Poverty imposes tremendous costs on all of us. Democracy is based on the idea of equal participation and these people are just trying to survive. They're not full participants."



Associate Professor Dan Zuberi

"I like to take students outside of the classroom to learn by first-hand experience. I encourage students to volunteer in the community, work with community organizations and apply research and critical thinking to community problems."

Dan Zuberi, Associate Professor of Social Policy

In Memoriam

William Robert (Bill) Outerbridge
August 10, 1926 – February 10, 2012

William Outerbridge earned his BSW and MSW (1962) at the University of Toronto, later earning his MA in Criminology from the University of California at Berkeley. He worked for the Ontario Probation Services as a Probation Officer, Juvenile Court Judge, Social Worker, Mental Health Professional and as Director of Planning (1954-1969) and served as Chairman of the National Parole Board (1974-1986).

Strengthening Field Education

Field education is the cornerstone of the MSW educational experience – practicum placements provide our students with exceptional learning opportunities. As a Faculty, we are committed to strengthening the all-important ties we have with partner organizations who offer placements to our students. The Bertha Rosenstadt Trust Fund in Health Research – which is available to our Faculty, as well as to all other Health Sciences Faculties at U of T – is an important way we accomplish this.

For the FIFSW Practicum Office, this fund is a valuable way to secure long-term commitments for MSW student placements, while also promoting cutting edge research in field education. How does it work? An organization agrees to take a pre-negotiated number of practicum students for three consecutive years. In return, the organization receives a three-year grant to conduct research, developed in consultation with our Faculty, that expands social work field education knowledge.

HERE'S A SAMPLING OF THE LEADING EDGE RESEARCH BEING CONDUCTED. READ ABOUT MORE PROJECTS IN THE UPCOMING YEAR IN REVIEW.

Mount Sinai Hospital

At Mount Sinai Hospital's social work department, Educational Coordinator Mary-Katherine Lowes and Manager Interprofessional Allied Health Jill Pascoe are leading a study now in its third year which is improving social work students' job interviewing skills. Students participate in two videotaped simulated interviews and receive feedback. The second interview (with an interprofessional panel) gives students a chance to practise what they have learned.

"We've seen such benefit in offering this. It's one thing to provide feedback," says Lowes, "another for students to learn by watching themselves on the videotapes which they take home and keep. Witnessing behaviour increases self-reflection. Because of this funding, we are building a tool that may have widespread benefit."

“

The interviews were extremely helpful. I was someone who already had professional work experience because I worked before my MSW. The interviews are of value both for students like myself who have already gone through job interviews and for those who are new to it.

”

Kasia Pytlik (MSW 2012) participated in the project during her practicum placement at Mount Sinai's neo-natal clinic where she now works full-time, providing emotional and practical support for families.

The Hincks-Dellcrest Centre

At the Hincks-Dellcrest Centre, the fund is being used for a project which aims to help students develop the skills to become more effective family therapists. "The fund is a wonderful way to allow us to build a research base so that we can then apply to do a larger scale project," says Ellen Katz, who is directing the research project which is in its first phase. Katz is Assistant Professor Status-Only at the Faculty and Acting Program Supervisor in Outpatients at the Hincks-Dellcrest Centre.

The project's goal is to develop simulated standardized scenarios that can be used in an exam format to assess students' abilities as family therapists. Students will be assessed as they conduct family therapy sessions in these simulated scenarios. Trained actors will play family members in the standardized scenarios which will be designed to represent typical family therapy sessions. "This project," says Katz, "grows out of Marion Bogo's work that has resulted in the use of simulated standardized scenario exams to assess first year MSW students at the Factor-Inwentash Faculty of Social Work. We would not be able to do this kind of research if it wasn't for the Bertha Rosenstadt Trust Fund in Health Research."

In 2011-2012, ten organizations received funding from the Bertha Rosenstadt Trust Fund in Health Research for research projects:

1. The Centre for Addiction and Mental Health: to support a research project in their Dual Diagnosis Program.
2. Mount Sinai Hospital: to support a Social Work Student Employment Interview Simulation Project.
3. Hincks-Dellcrest Centre: to support a research project "Developing a Family Therapy OSCE: Assessing and Articulating Family Therapy Clinical Core Competencies in Children's Mental Health across their Disciplines."
4. George Hull Centre for Children and Families: to expand a Family Therapy Program by making it more experiential and develop a Field Instructor Support Program.
5. Hospital for Sick Children: to support a research project "Bringing Community Leaders to a Paediatric Hospital Setting: Evaluation of a Group Support Program for Children/Youth with HIV."
6. Sunnybrook Health Sciences Centre: to support a research project "Social Work Student Education Program" to evaluate the Social Work Student Education Standard while attracting additional field instructors.
7. Toronto East General Hospital: to support a research project "Enhancing the Field Instructors' Experience."
8. Women's College Hospital: to support a research project "Exploring Arts-Based and Narrative Reflection in Social Work Field Education."
9. Toronto Rehabilitation Institute: to support integration of standardized self-assessment measures for clinical practice.
10. The University Health Network: to support the presentation of findings from research projects.